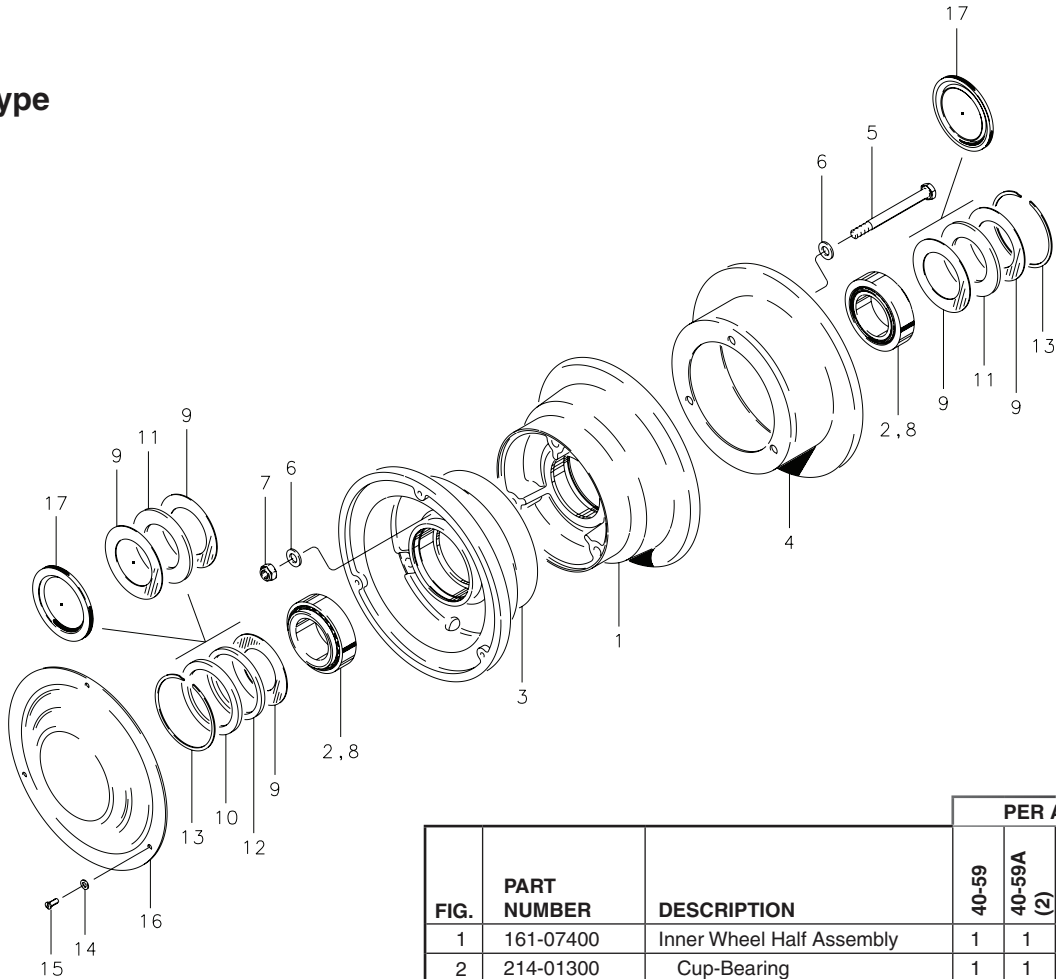


40-59, 40-59A, 40-59D, 40-59E

Tube-Type



NOTES:

- (1) Alternate chrome plated disc.
- (2) Also available with chrome plated disc. To order, specify assembly number followed by "CHROME."
- (3) Performance gold disc no longer available.

| FIG. | PART NUMBER | DESCRIPTION | PER ASSY. | | | |
|------|----------------------|--|-----------|------------|--------|--------|
| | | | 40-59 | 40-59A (2) | 40-59D | 40-59E |
| 1 | 161-07400 | Inner Wheel Half Assembly | 1 | 1 | 1 | 1 |
| 2 | 214-01300 | Cup-Bearing | 1 | 1 | 1 | 1 |
| 3 | 162-06900 | Outer Wheel Half Assembly | 1 | 1 | 1 | 1 |
| 2 | 214-01300 | Cup-Bearing | 1 | 1 | 1 | 1 |
| 4 | 164-06900 | Brake Disc | 1 | | 1 | 1 |
| | 164-07500 | Brake Disc | | 1 | | |
| | 164-17500 (1) (3) | Brake Disc - Chrome Brake Disc - Performance Gold | | 1 | | |
| 5 | 103-21800 | Bolt (AN5-34A) | 3 | 3 | 3 | 3 |
| 6 | 095-10500 | Washer (AN960-516) | 6 | 6 | 6 | 6 |
| 7 | 094-10400 | Nut (MS21044-N5) | 3 | 3 | 3 | 3 |
| 8 | 214-01400 | Cone-Bearing | 2 | 2 | 2 | 2 |
| 9 | 153-00300 | Ring-Grease Seal | 1 | 1 | | 1 |
| | 153-00400 | Ring-Grease Seal | 2 | 2 | | |
| | 153-00900 | Ring-Grease Seal | | | | 2 |
| 10 | 153-01500 | Ring-Grease Seal | 1 | 1 | | 1 |
| 11 | 154-00300 | Felt-Grease Seal | 1 | 1 | | |
| | 154-00800 | Felt-Grease Seal | | | | 1 |
| 12 | 154-01300 | Felt-Grease Seal | 1 | 1 | | 1 |
| 13 | 155-00100 | Snap Ring | 2 | 2 | 2 | 2 |
| 14 | 095-15100 | Washer-Lock (MS35333-38) | | | 3 | |
| 15 | 102-00600 | Screw | | | 3 | |
| 16 | 157-00900 | Dust Shield | | | 1 | |
| 17 | 154-03000 | Molded Grease Seal | | | 2 | |